

FINANCIALink

Your Money Management Newsletter

TARANTO FINANCIAL SERVICES & CPAs

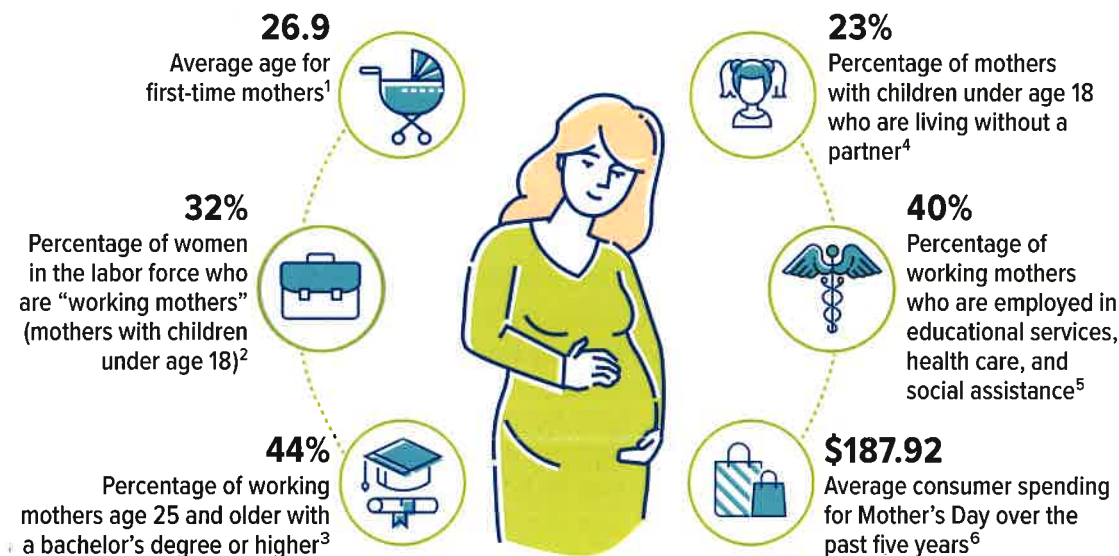
1263 Route 31 • Lebanon, NJ 08833
 (908) 730-7211 • Fax (908) 735-5524
 Email: gtaranto@americanportfolios.com
 www.TarantoAssociates.com



Gregory Taranto, CPA

Motherhood by the Numbers

While mothers deserve appreciation every day of the year, Mother's Day offers a special opportunity to celebrate them. In honor of mothers everywhere, here are some facts about motherhood that might surprise you.



Sources: 1) Centers for Disease Control and Prevention, 2020; 2–5) U.S. Census Bureau, December 2020; 6) National Retail Federation, 2020



Most common password in 2020. The next most common passwords were 123456789, picture1, password, and 12345678. A strong password should avoid dictionary words, sequential numbers, adjacent keyboard combinations, and personal information. It should contain at least eight characters (preferably longer) and include a combination of capital and lowercase letters, numbers, and symbols.

Source: CNN, November 19, 2020

Securities Offered Through:
 American Portfolio Financial Services, Inc., 1263 Route 31, Lebanon, NJ 08833, Member FINRA/SIPC.

Practical insights for your **FINANCIAL GOALS**

How Well Do You Understand Retirement Plan Rules?

Qualified retirement plans, such as IRAs and 401(k)s, have many rules, and some of them can be quite complicated. Take the following quiz to see how well you understand some of the finer points.

- 1. You can make an unlimited number of retirement plan rollovers per year.**
 - A. True
 - B. False
 - C. It depends
- 2. If you roll money from a Roth 401(k) to a Roth IRA, you can take a tax-free distribution from the Roth IRA immediately as long as you have reached age 59½.**
 - A. True
 - B. False
 - C. It depends
- 3. You can withdraw money penalty-free from both your 401(k) and IRA (Roth or traditional) to help pay for your children's college tuition or to pay for health insurance in the event of a layoff.**
 - A. True
 - B. False
 - C. It depends
- 4. If you retire or otherwise leave your employer after age 55, you can take penalty-free distributions from your 401(k) plan. You can't do that if you roll 401(k) assets into an IRA.**
 - A. True
 - B. False
 - C. It depends

1. C. It depends. Rollovers can be made in two ways — through a direct rollover, also known as a trustee-to-trustee transfer, in which you authorize the funds to be transferred directly from one account or institution to another, or through an indirect rollover, in which you receive a check in your name (less a required tax withholding) and then reinvest the full amount (including the amount withheld) in a tax-deferred account within 60 days. If the full amount is not reinvested, the outstanding amounts will be considered a distribution and taxed accordingly, including any applicable penalty. Generally, individuals can make an unlimited number of rollovers in a 12-month period, either direct or indirect, involving employer-sponsored plans, as well as an unlimited number of direct rollovers between IRAs; however, only one indirect (60-day) rollover between two IRAs is permitted within a 12-month period.

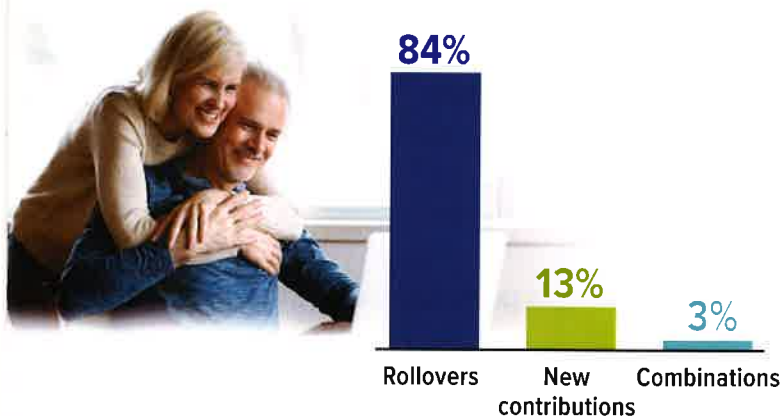
2. C. It depends. Beware of the five-year rule as it applies to Roth IRAs. If you establish your first Roth IRA with your Roth 401(k) rollover dollars, you will have to wait five years to make a qualified withdrawal from the Roth IRA, regardless of how long you've held the money in your Roth 401(k) account, even if you are over 59½. However, if you have already met the five-year holding requirement with any Roth IRA, you may take a tax-free, qualified withdrawal.

3. B. False. You can take penalty-free withdrawals from an IRA, but not from a 401(k) plan, to pay for a child's qualifying education expenses or to pay for health insurance premiums in the event of a job loss. Note that ordinary income taxes will still apply to the taxable portion of the distribution, unless it's from a Roth account that is otherwise qualified for tax-free withdrawals.

4. A. True. If you leave your employer after you reach age 55, you may want to consider carefully whether to roll your money into an IRA. Although IRAs may offer some advantages over employer-sponsored plans — such as a potentially broader offering of investment vehicles — you generally cannot take penalty-free distributions from an IRA between age 55 and 59½ as you can from a 401(k) plan if you separate from service. If you might need to access funds before age 59½, you could leave at least some of your money in your employer plan, if allowed.

When leaving an employer, you generally have several options for your 401(k) plan dollars. In addition to rolling money into an IRA and leaving the money in your current plan (if the plan balance is more than \$5,000), you may be able to roll the money into a new employer's plan or take a cash distribution, which could result in a 10% tax penalty (in addition to ordinary income taxes) on the taxable portion, unless an exception applies.

Shares of Traditional IRA Assets Opened with...



Source: Investment Company Institute, 2020 (data reflects IRAs opened in 2016)

Growing Interest in Socially Responsible Investing

U.S. assets invested in socially responsible strategies topped \$17.1 trillion at the start of 2020, up 42% from two years earlier. Sustainable, responsible, and impact (SRI) investments now account for nearly one-third of all professionally managed U.S. assets.¹ This upward trend suggests that many people want their investment dollars to pursue a financial return and make a positive impact on the world.

There is also wider recognition that good corporate citizenship can benefit the bottom line. A favorable public image might increase sales and brand value, and conservation efforts can help reduce costs, improving profit margins. Some harmful business practices are now viewed as reputational or financial risks that could damage a company's longer-term prospects.

ESG Explained

SRI strategies incorporate environmental, social, and governance (ESG) considerations into investment decisions in a variety of ways. ESG data for publicly traded companies is often provided alongside traditional financial data by investment research and rating services. Some examples of prominent ESG issues include climate change, sustainable natural resources, labor and equal employment opportunity, human rights, executive pay, and board diversity.

A simple exclusionary approach (also called negative screening) allows investors to steer clear of companies and industries that profit from products or activities they don't wish to finance. These choices can vary widely depending on the individual investor's ethics, philosophies, and religious beliefs, but alcohol, tobacco, gambling, and weapons are some typical exclusions.

Similarly, positive screening can help investors identify companies with stronger ESG track records and/or policies and practices that they support. Impact investing is a less common strategy that directly targets specific environmental or social problems in order to achieve measurable outcomes.

There are also a variety of integrative approaches that combine robust ESG data with traditional financial analysis. These tend to be proactive and comprehensive, so they are less likely to avoid entire industries. Instead, analysts and portfolio managers may compare industry peers to determine which companies have taken bigger steps to meet environmental and social challenges, potentially gaining a competitive advantage.

Investment Opportunities

The range of investment vehicles used in SRI strategies includes stocks, mutual funds, exchange-traded funds (ETFs), and, to a lesser extent, fixed-income assets.

Number of ESG Investment Funds



Source: US SIF Foundation, 2020

Altogether, there are more than 800 different investment funds that incorporate ESG factors, and the field is expanding rapidly.²

Many SRI funds are broad based and diversified, some are actively managed, and others track a particular index with its own collection of SRI stocks. ESG criteria can vary greatly from one SRI fund to another. Specialty funds, however, may focus on a narrower theme such as clean energy; they can be more volatile and carry additional risks that may not be suitable for all investors.

Socially responsible investing may allow you to further both your own economic interests and a cause that matters to you. Moreover, recent research suggests you shouldn't have to accept subpar returns in order to support your beliefs.³

As with any portfolio, it's important to pay attention to the composition and level of risk and to monitor investment performance. Be prepared to make adjustments if any of your holdings don't continue to meet your financial needs and reflect your values.

The return and principal value of SRI stocks and funds fluctuate with changes in market conditions. Shares, when sold, may be worth more or less than their original cost. There is no guarantee that an SRI fund will achieve its objectives. Diversification does not guarantee a profit or protect against investment loss.

Investment funds are sold by prospectus. Please consider the investment objectives, risks, charges, and expenses carefully before investing. The prospectus, which contains this and other information about the investment company, can be obtained from your financial professional. Be sure to read the prospectus carefully before deciding whether to invest.

1-2) US SIF Foundation, 2020

3) *The Wall Street Journal*, March 16, 2020

New Changes to College Financial Aid and Education Tax Benefits



In late December 2020, Congress passed the Consolidated Appropriations Act, 2021, another relief package in response to the pandemic. The bill included several provisions related to education, including \$22.7 billion for colleges and universities. Here are some key highlights.

Simplified FAFSA. The bill accomplishes the long-held bipartisan objective of simplifying the Free Application for Federal Student Aid, or FAFSA, starting with the 2023–2024 school year. For example, the legislation significantly reduces the number of overall questions (including eliminating questions about drug convictions and Selective Service status); makes the income protection allowance more favorable for parents and students, which will allow more income to be shielded from the formula; increases the income threshold (from \$50,000 to \$60,000) to qualify for the simplified needs test, an expedited formula in the FAFSA that doesn't count family assets; and widens the net of students eligible for a Pell Grant.

However, the FAFSA will no longer divide a parent's assessment by the number of children in college at the same time. This change has the potential to significantly reduce the amount of financial aid offered to middle- and high-income families who have multiple children in college at the same time.

Goodbye EFC terminology. In the future, the expected family contribution (EFC) will be referred to as the student

aid index, or SAI, in an attempt to more accurately reflect what this number represents: a yardstick for aid eligibility rather than a guarantee of what families will pay (families often pay more than their EFC amount).

Expanded Lifetime Learning credit. The bill increased the income limits necessary to qualify for the Lifetime Learning credit, an education tax credit worth up to \$2,000 per year for courses taken throughout one's lifetime to acquire or improve job skills. Starting in 2021, a full credit will be available to single filers with a modified adjusted gross income (MAGI) below \$80,000 and joint filers with a MAGI below \$160,000 (the credit phases out for single filers with incomes between \$80,000 and \$90,000 and joint filers with incomes between \$160,000 and \$180,000). These are the same income limits used for the American Opportunity credit. To accommodate an expanded Lifetime Learning credit, Congress repealed the deduction for qualified college tuition and fees for 2021 and beyond.

Employer help with student loan repayment. The bill extended a provision allowing employers to pay up to \$5,250 of employees' student loans on a tax-free basis for another five years. This provision, included in the Consolidated Aid, Relief, and Economic Security (CARES) Act, would have expired at the end of 2020.

The information in this newsletter is not intended as tax, legal, investment, or retirement advice or recommendations, and it may not be relied on for the purpose of avoiding any federal tax penalties. You are encouraged to seek guidance from an independent tax or legal professional. The content is derived from sources believed to be accurate. Neither the information presented nor any opinion expressed constitutes a solicitation for the purchase or sale of any security. This material was written and prepared by Broadridge Advisor Solutions. © 2021 Broadridge Financial Solutions, Inc.

Do you have questions about your workplace retirement plan or IRA? Would you like to consider social responsibility factors in your portfolio? Call us for an appointment today.

Working toward a better financial future,